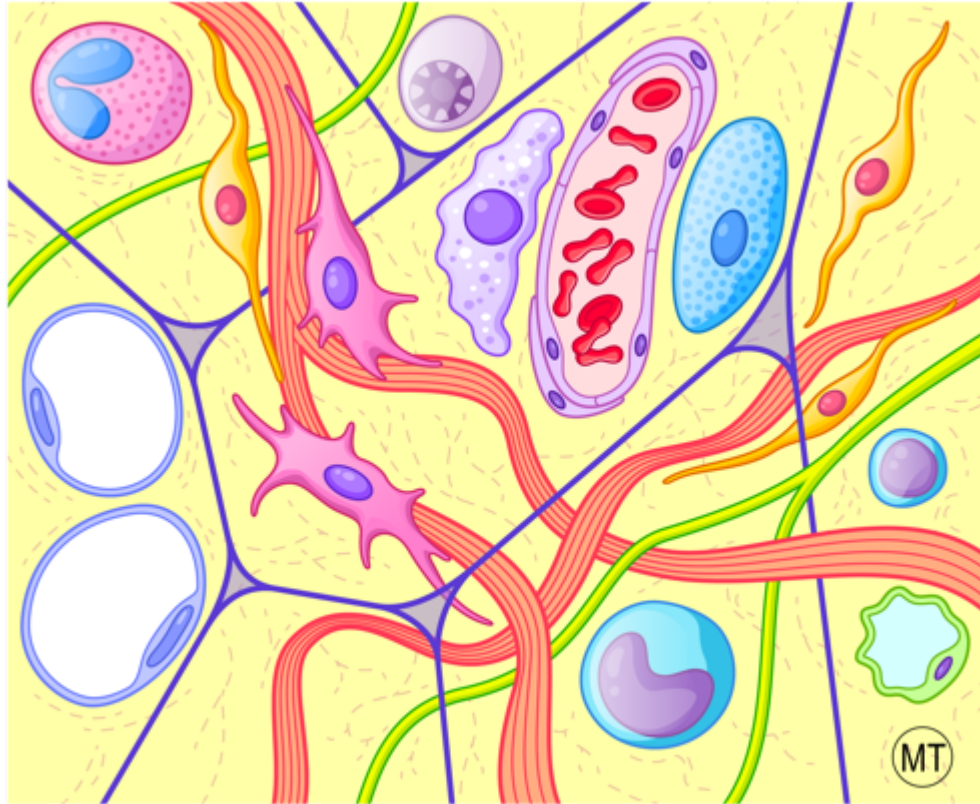
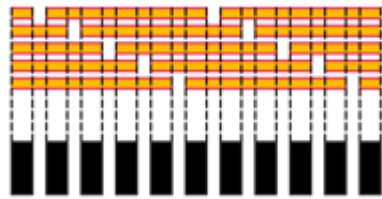


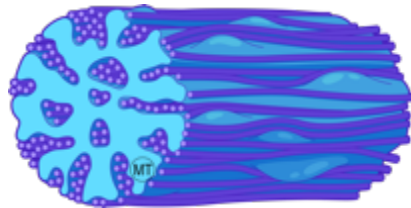
Schémas

Tissus conjonctifs

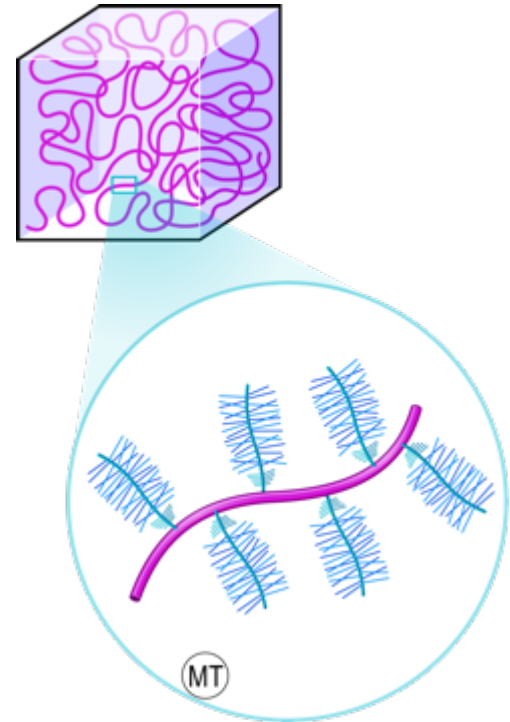




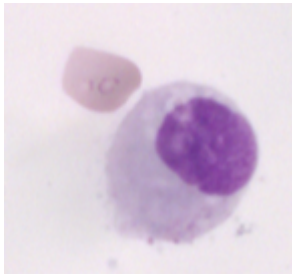
Fibrille de collagène



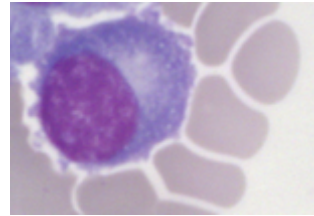
Fibres élastiques



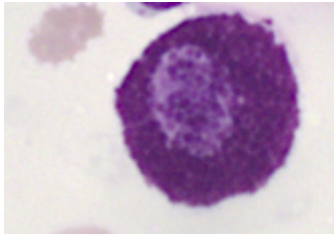
La substance fondamentale



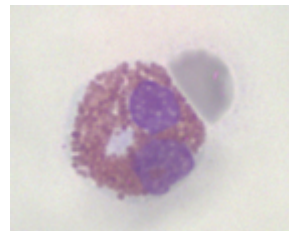
Macrophage



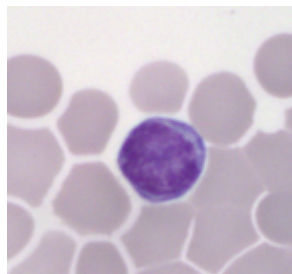
Plasmocyte



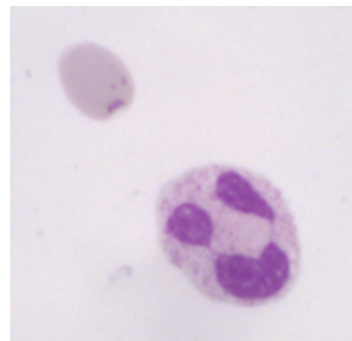
Mastocyte



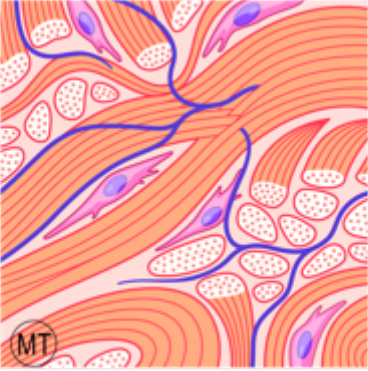
Granulocyte éosinophile



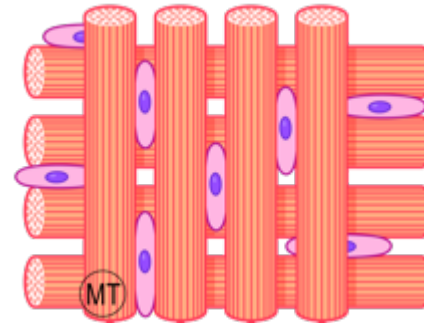
Lymphocytes



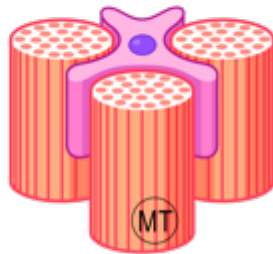
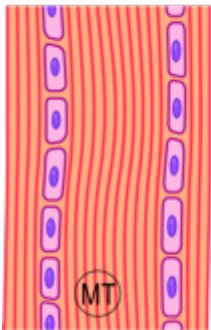
Granulocyte neutrophile



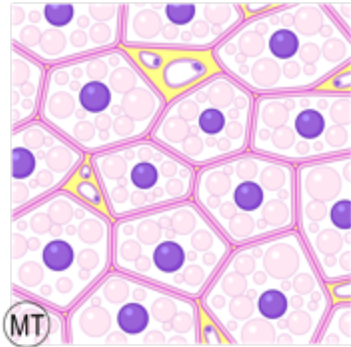
Tissu conjonctif dense non orienté



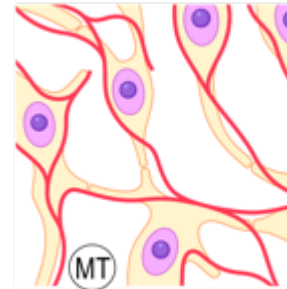
Tissu conjonctif dense orienté bi- ou multi-tendu



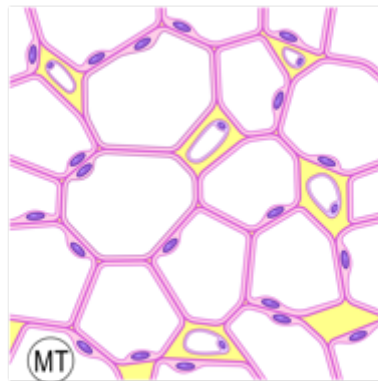
Tissu conjonctif dense orienté uni-tendu



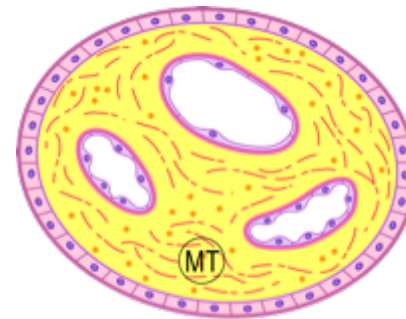
Tissu adipeux brun



Tissu conjonctif réticulaire



Tissu adipeux blanc



Tissu conjonctif mucoïde