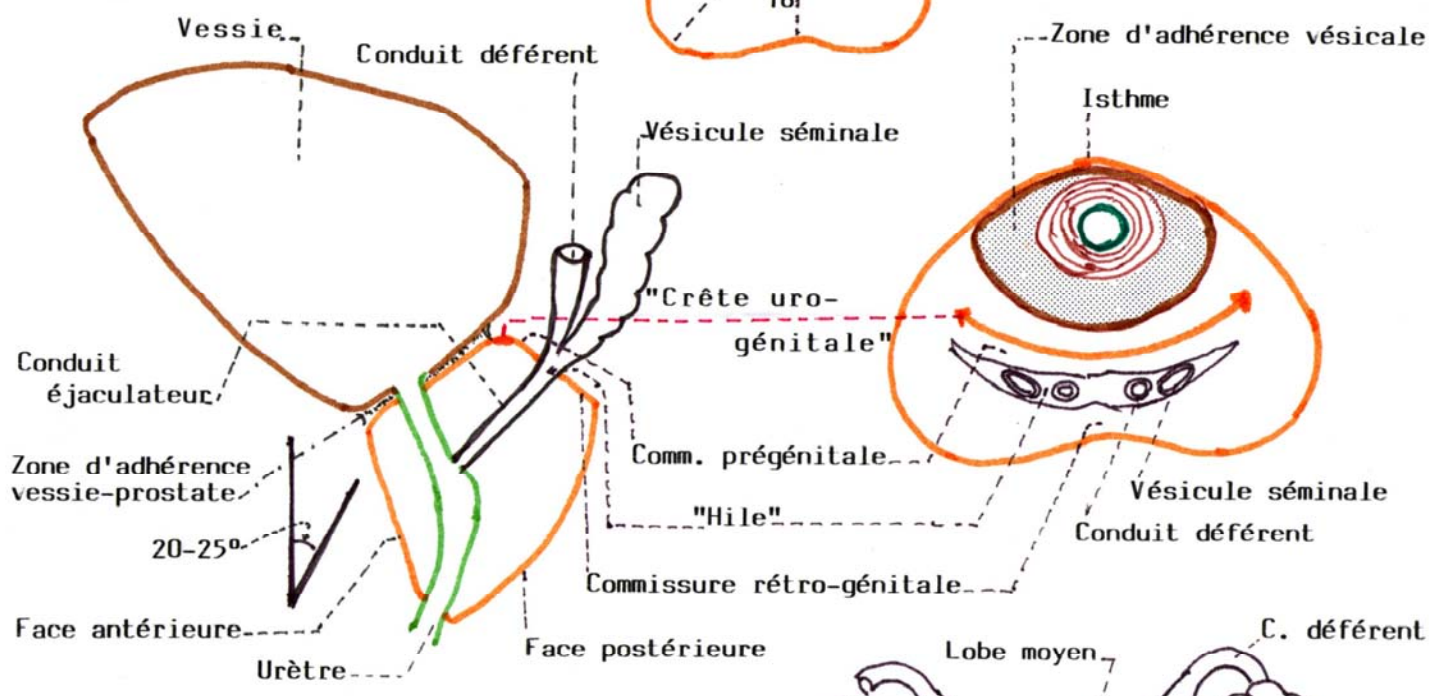
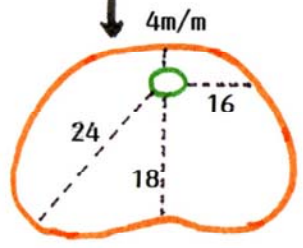


PROSTATE

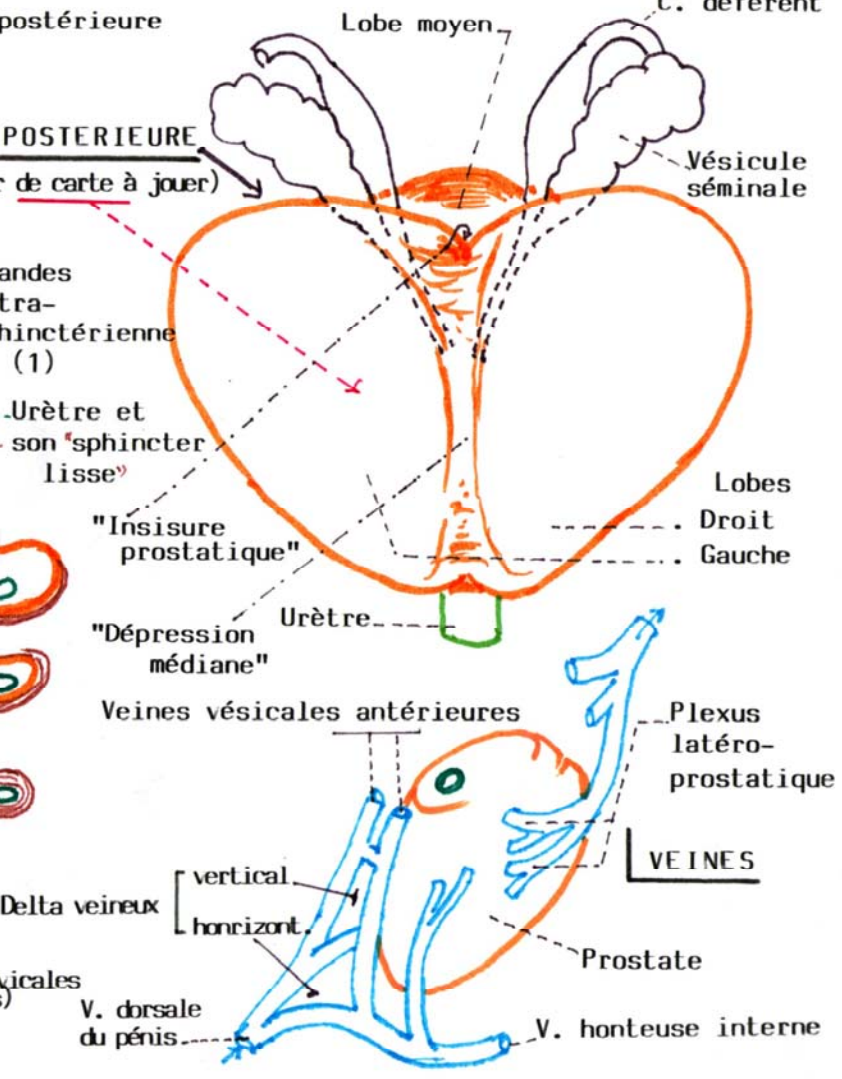
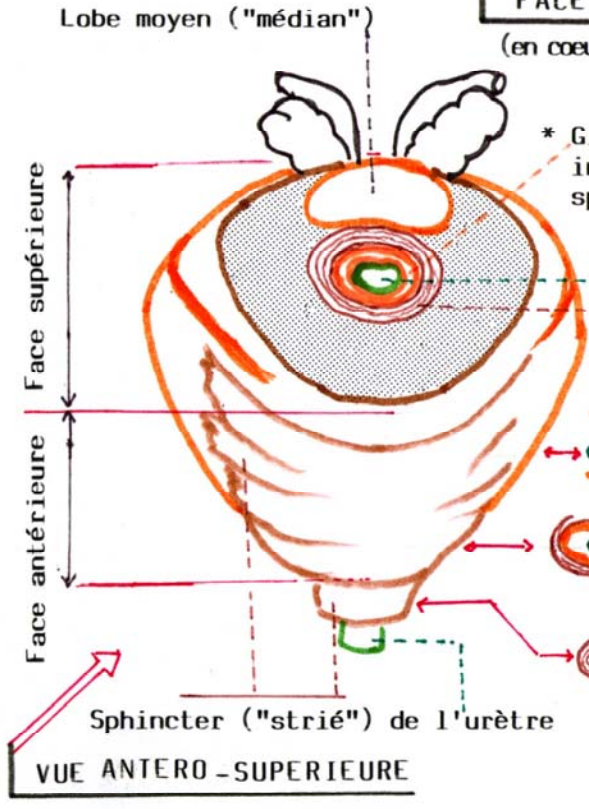
RAYONS URETRO-PROSTATIQUES (en m/m)

PROFIL SCHEMATIQUE

BASE de la PROSTATE



FACE POSTERIEURE (en coeur de carte à jouer)



* (1) Glandes intrasphinctériennes, sous-cervicales sus-montanales (au-dessus du colliculus)