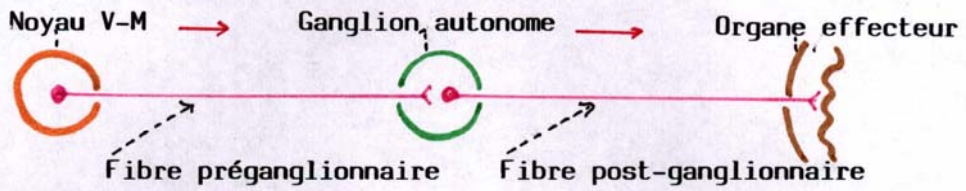
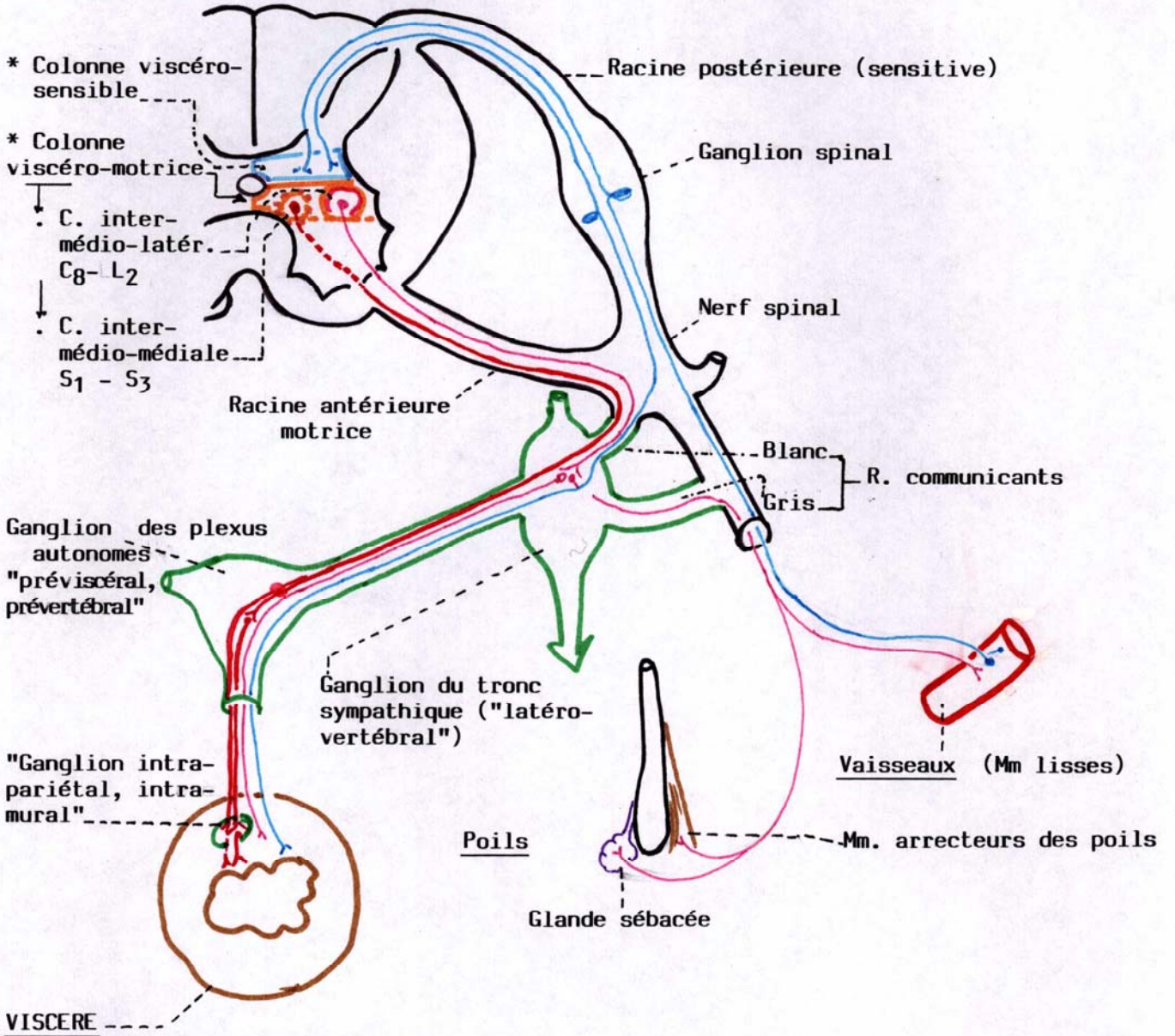


MOELLE EPINIÈRE : S.N. AUTONOME SYMPATHIQUE ET PARASYMPATHIQUE

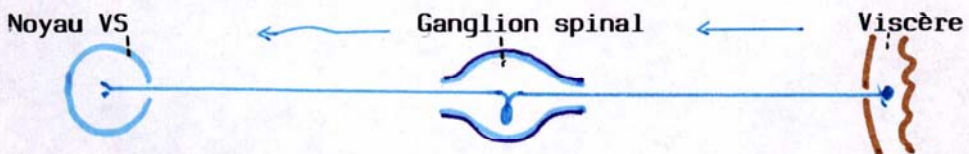
A. PARTIE VISCERO-MOTRICE



MOELLE EPINIÈRE



B. PARTIE VISCERO-SENSIBLE



A et B : Diagramme de la systématisation des voies viscéro-motrice et viscéro-sensible