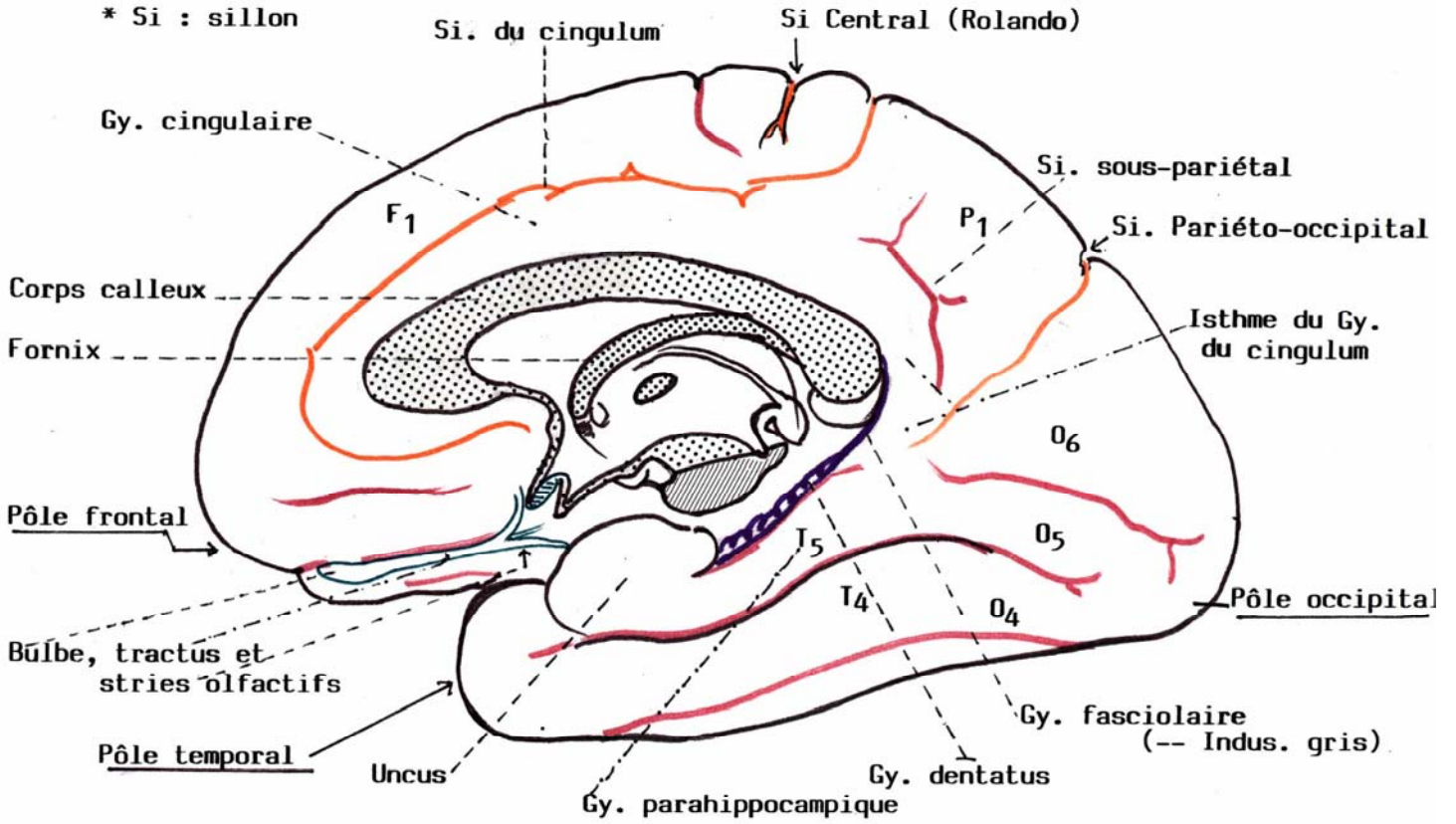
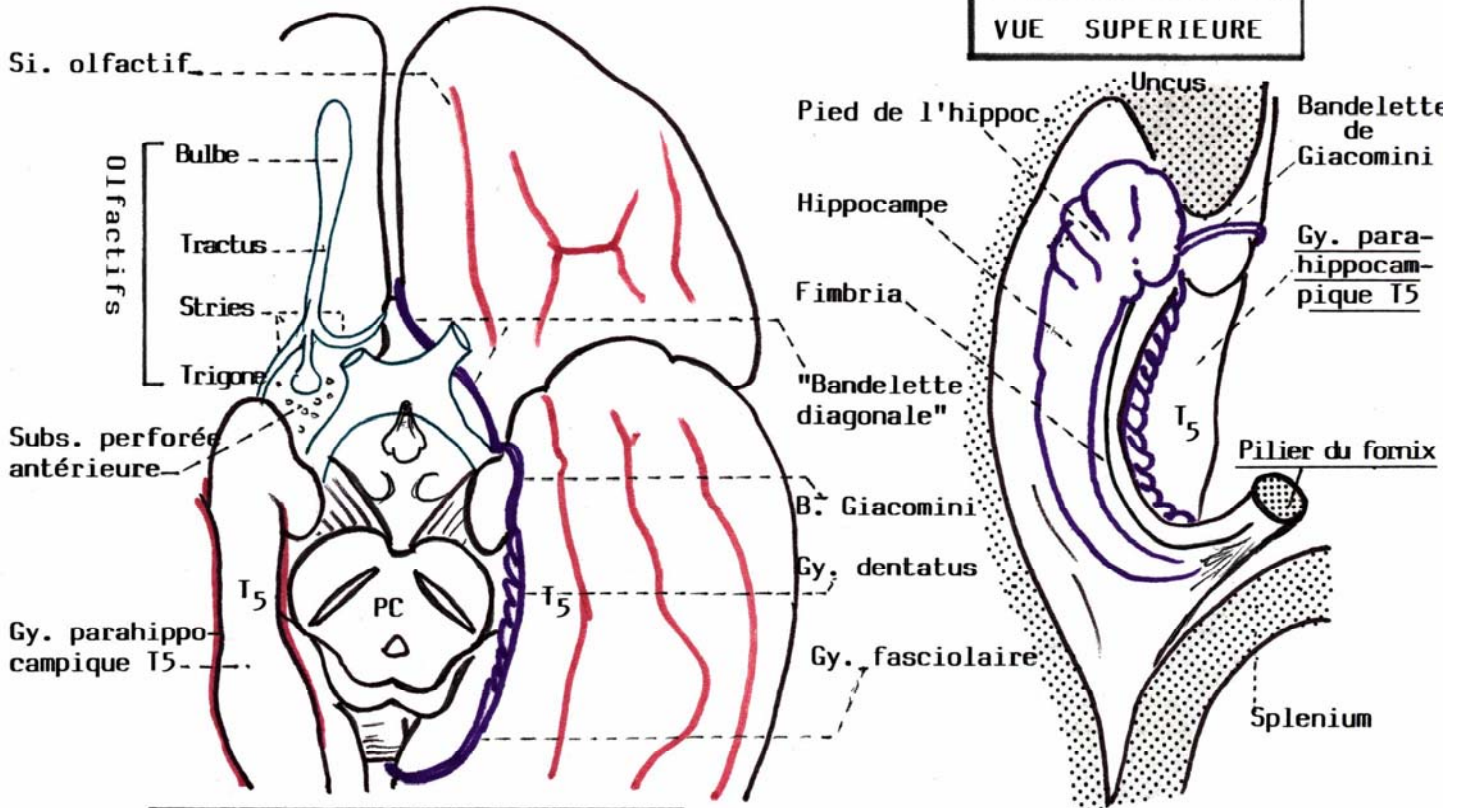


FACE INFERO-MEDIALE DU CERVEAU DROIT
 ("LOBE LIMBIQUE") de BROCA

* Gy : gyrus
 * Si : sillon



VUE SUPERIEURE



FACE INFÉRIEURE du CERVEAU

PLANCHER de la CORNE TEMPORALE du VENTRICULE LATÉRAL