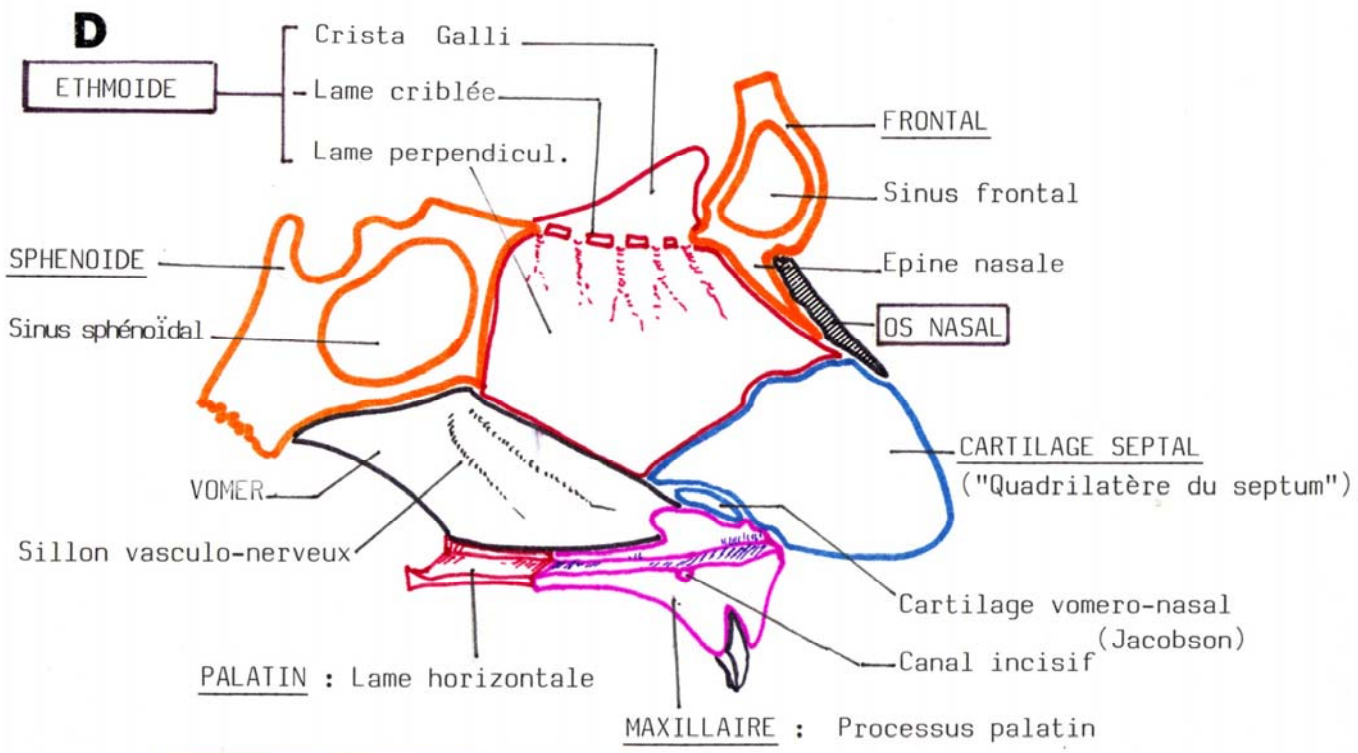
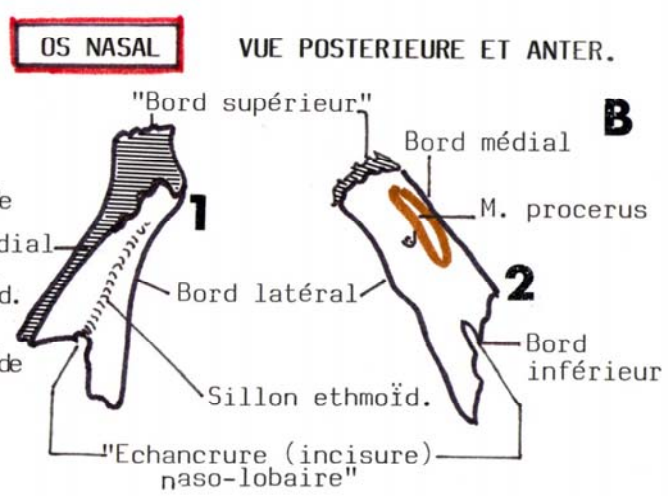
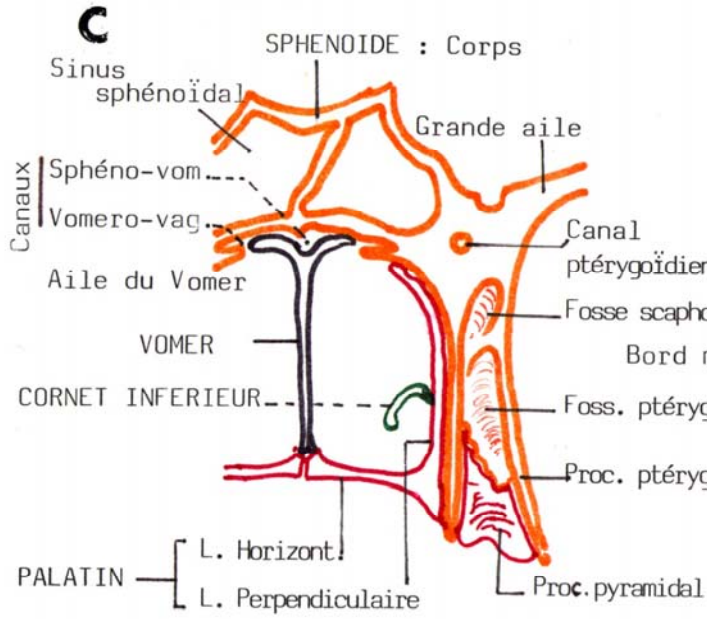
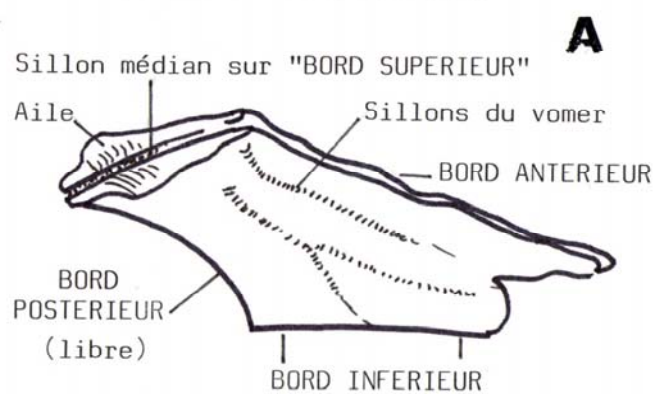


MASSIF FACIAL SUPERIEUR

- A.** VOMER
- B.** OS NASAL en vue post (1) et antér. (2)
- C. et D.** CONNEXIONS OSSEUSES SUR 2 COUPES : FRONTALE (C) ET SAGITTALE (D)

VOMER
FACE LATÉRALE DROITE



COUPE SAGITTALE PARAMÉDIANE