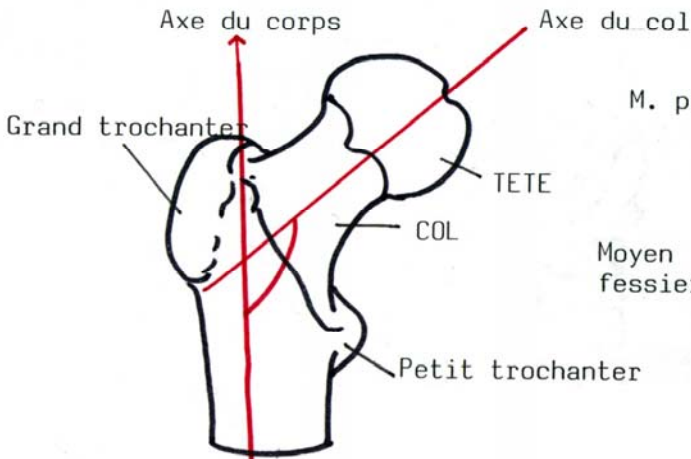
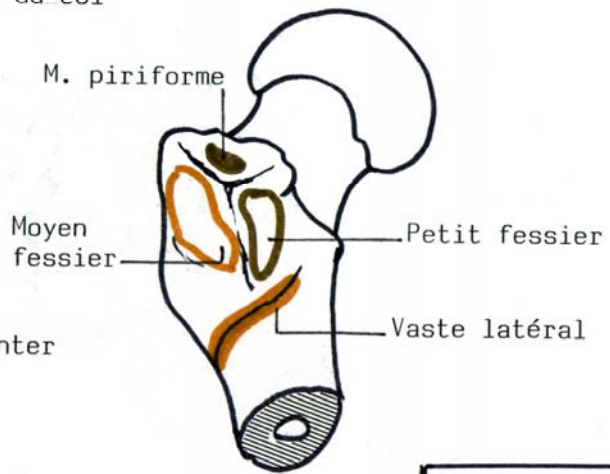


VUE ANTERIEURE

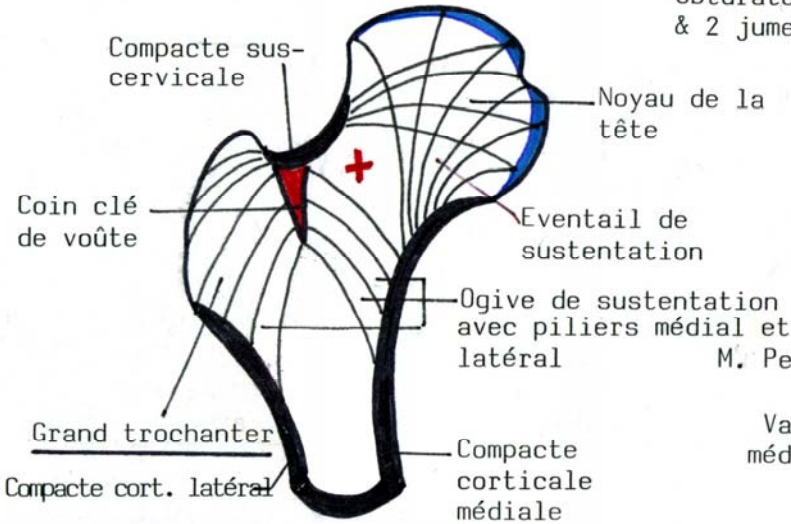


LE GRAND TROCHANTER
VUE ANTERO-LATERALE

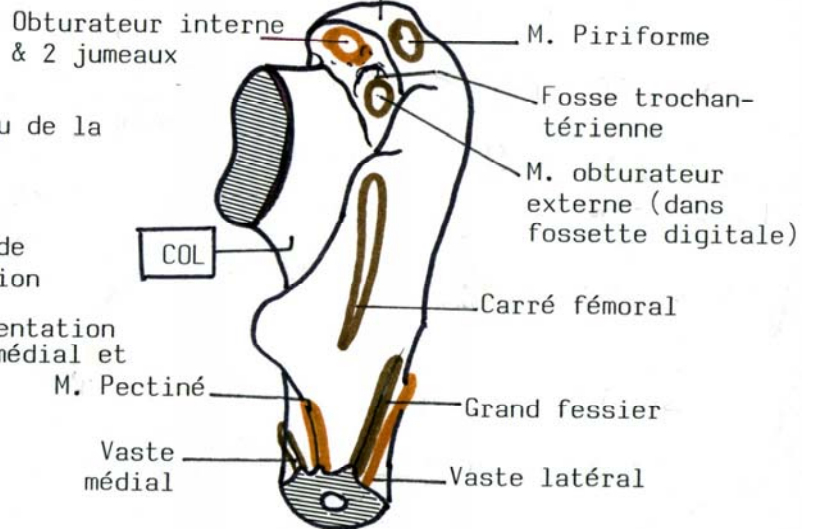


ANGLE D'INCLINAISON DU COL

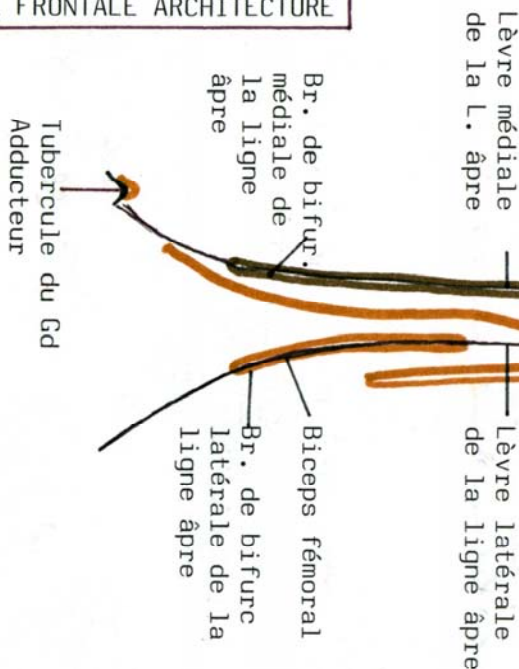
125°



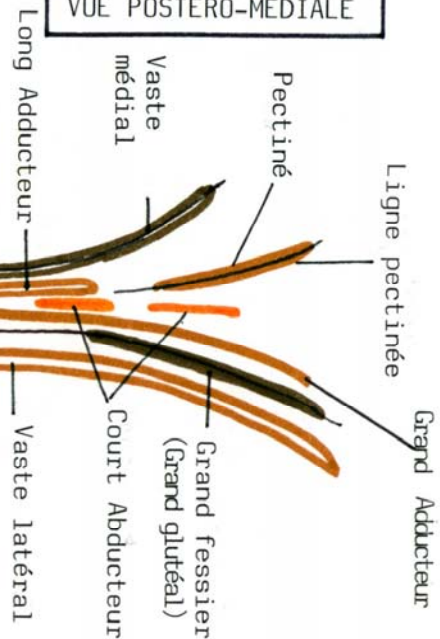
GRAND TROCHANTER



COUPE FRONTALE ARCHITECTURE



VUE POSTERO-MEDIALE



INSERTIONS SUR LA LIGNE APRE