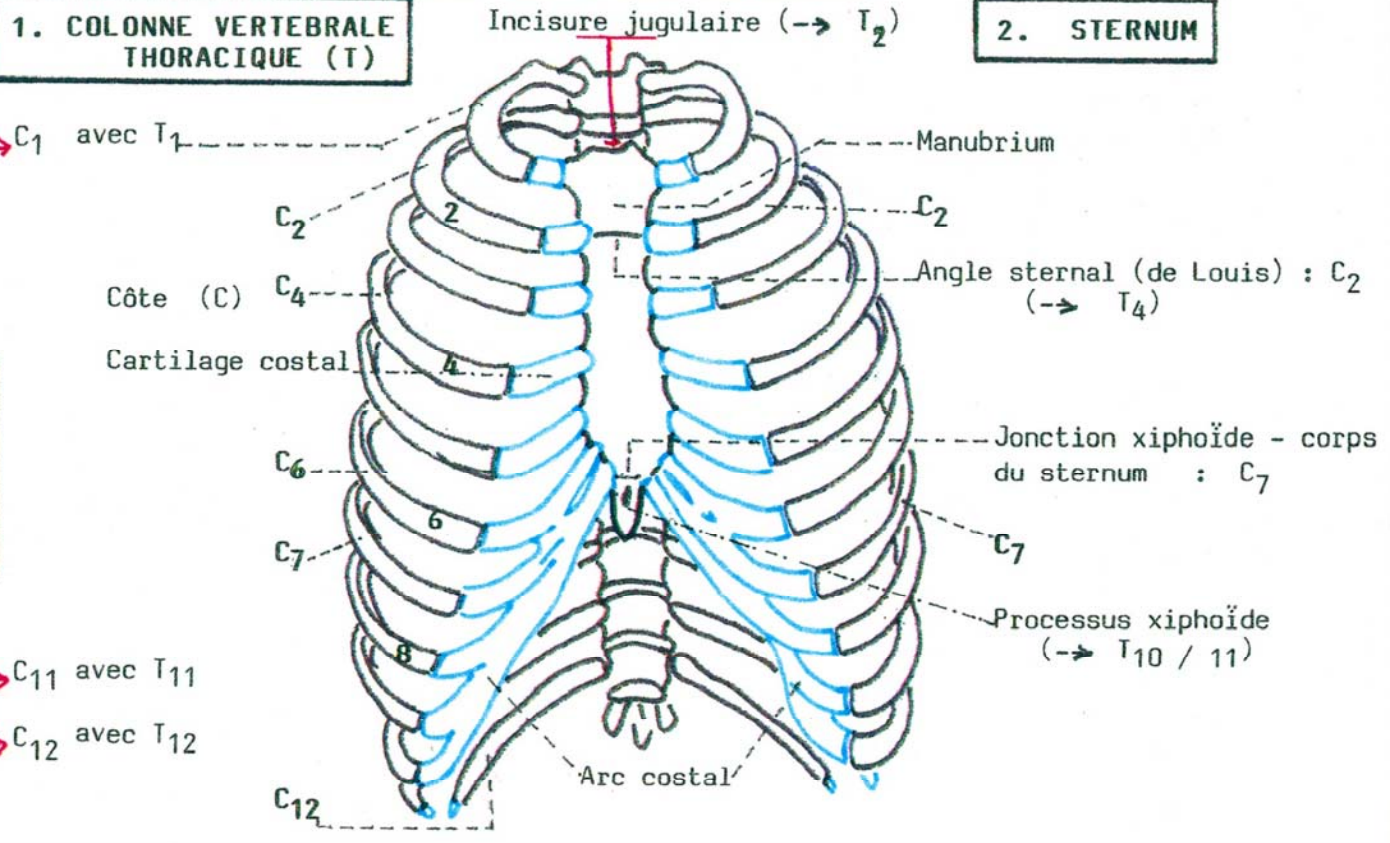


**CAGE THORACIQUE  
VUE ANTERIEURE**

**1. COLONNE VERTEBRALE THORACIQUE (T)**

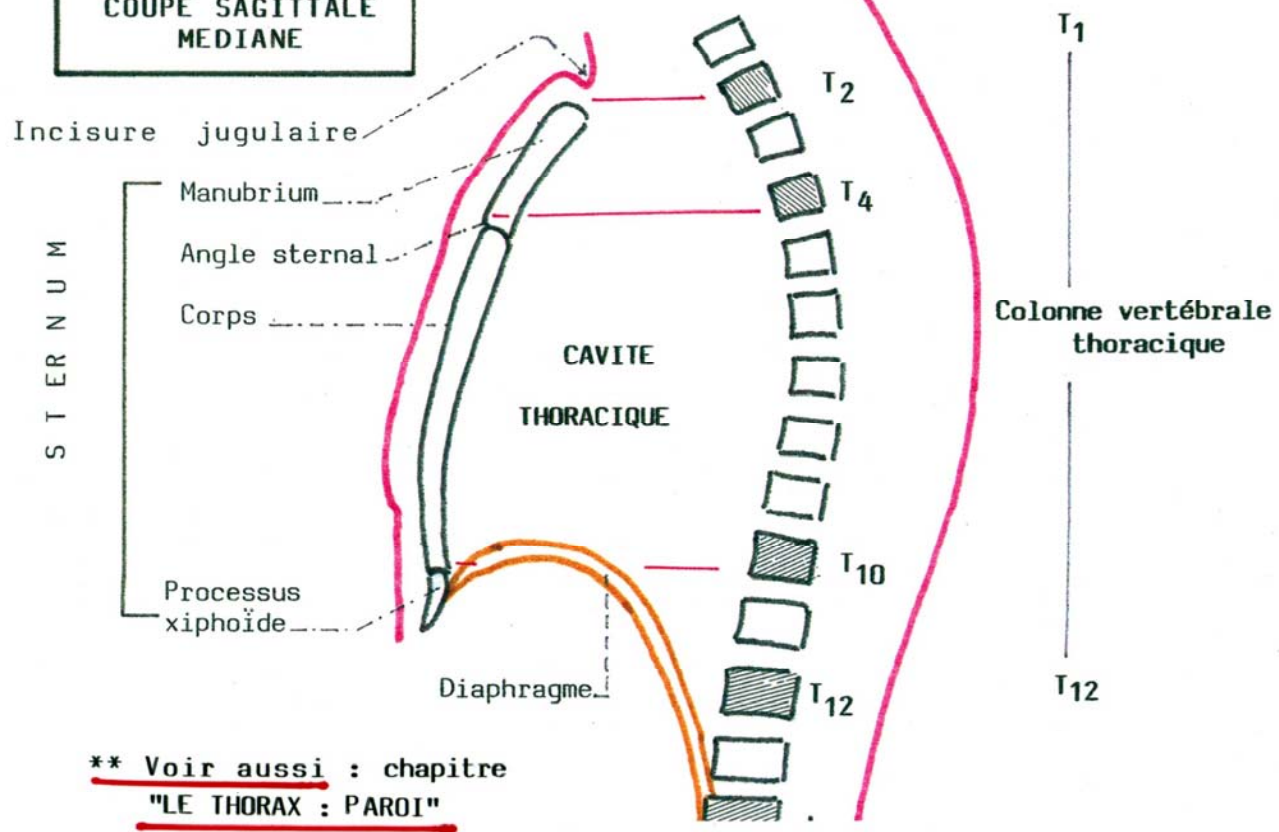
**2. STERNUM**

**3. COTES**



**COUPE SAGITTALE MEDIANE**

**\*\* REGION POSTERO-LATERALE**



**\*\* Voir aussi : chapitre "LE THORAX : PAROI"**