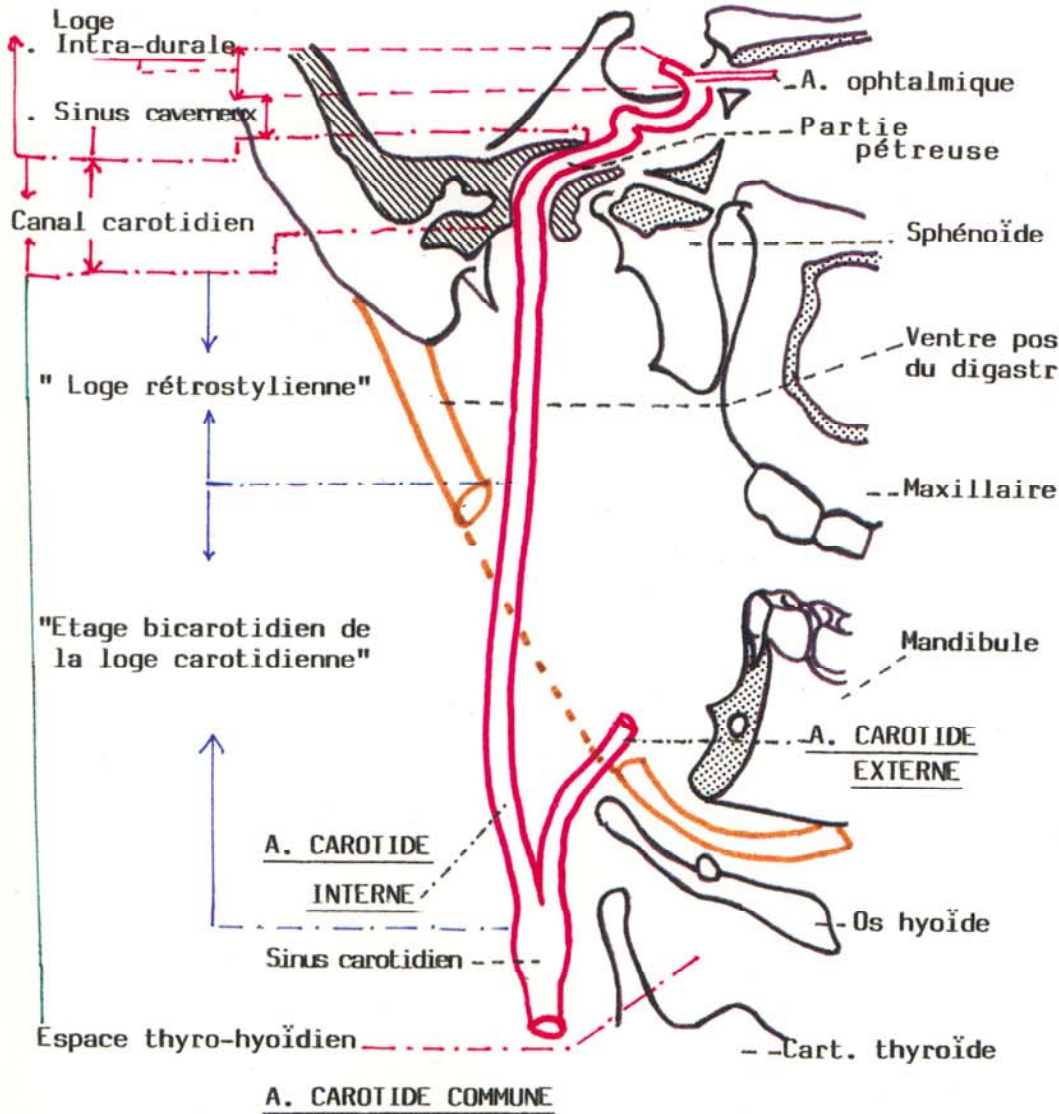


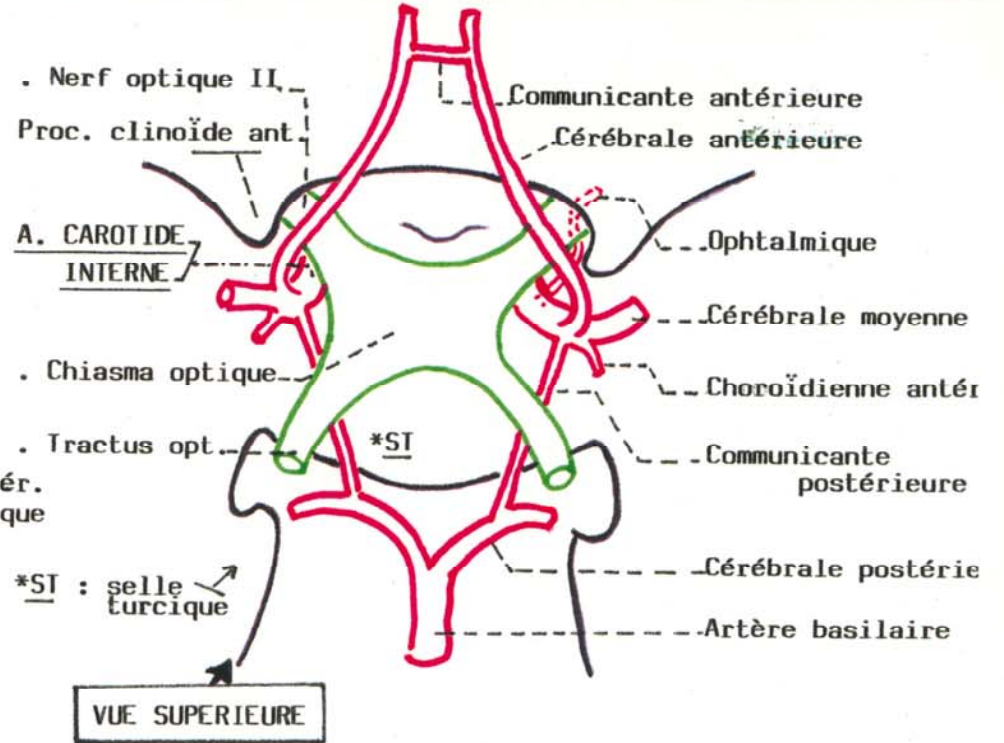
ARTERE CAROTIDE INTERNE

(A) et (B) CAROTIDE DROITE - VUE LATERALE

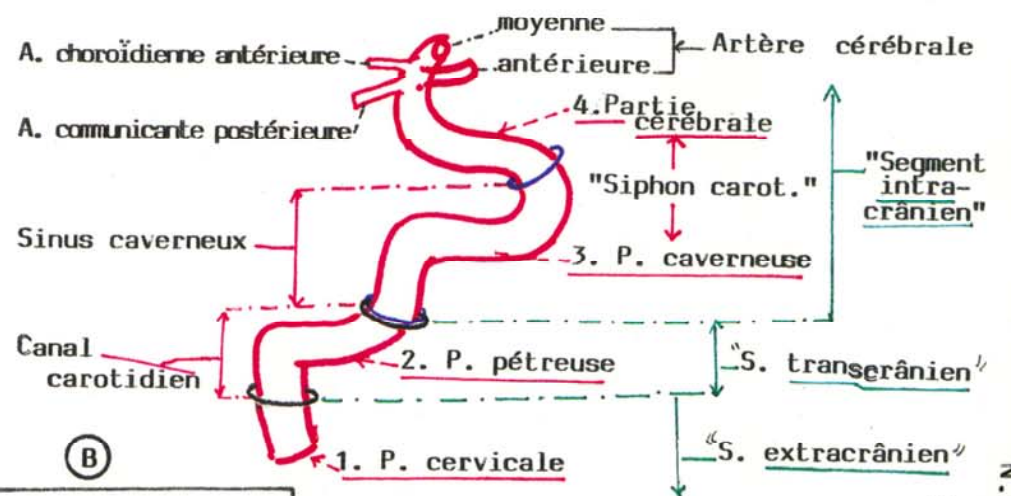


** VOIR LA SUITE DANS S.N.C.

(C) CERCLE ARTERIEL du CERVEAU (Polygone de WILLIS)



VUE SUPERIEURE



CI : SEGM. CRANIAL