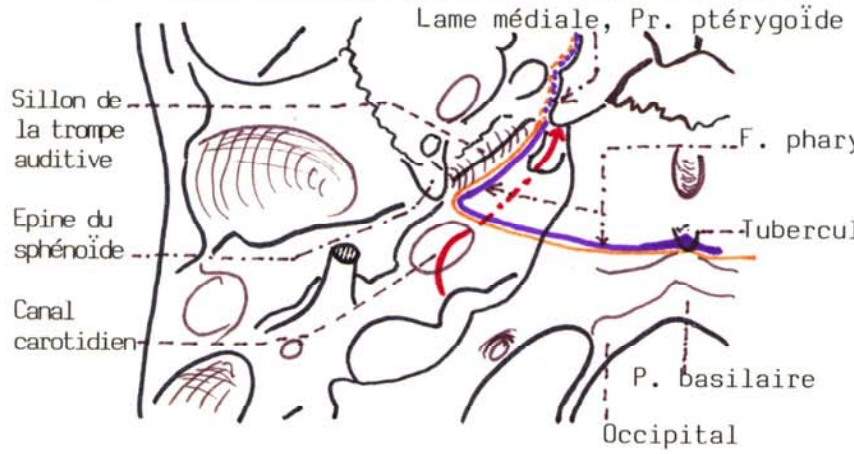
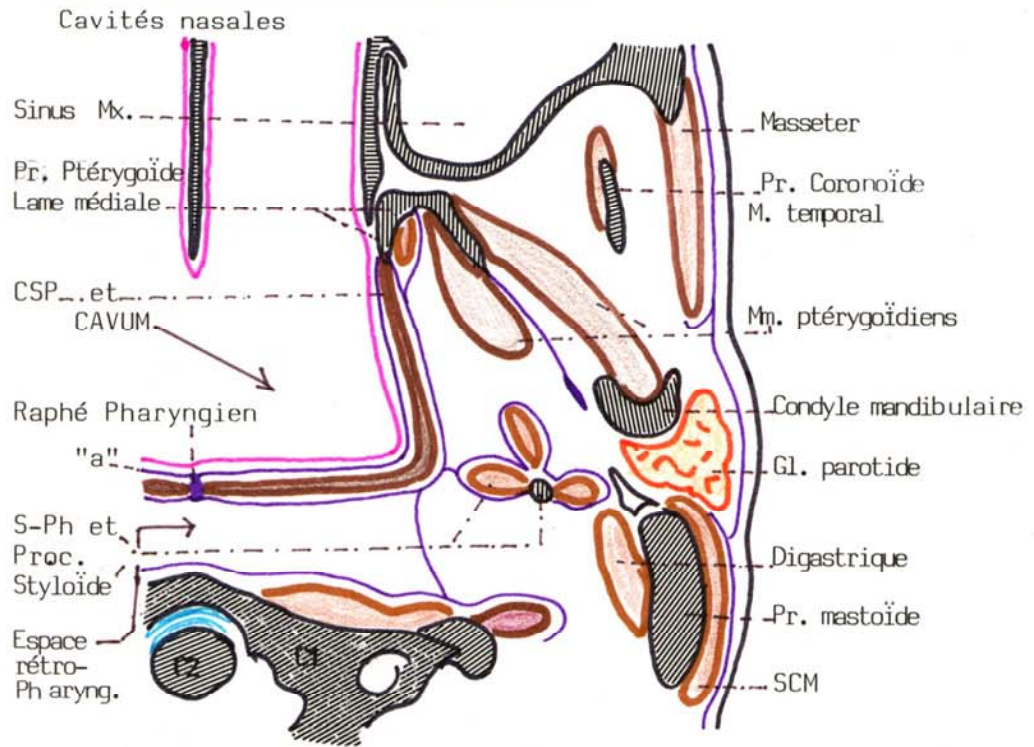


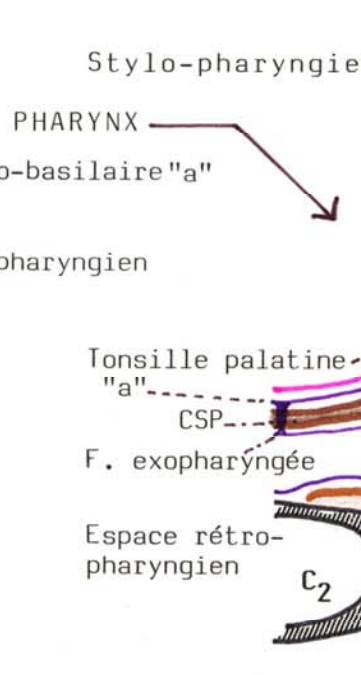
INSERTION CRANIENNE de la FASCIA PHARYNGO BASILAIRE : VUE INF. ; COTE DROIT



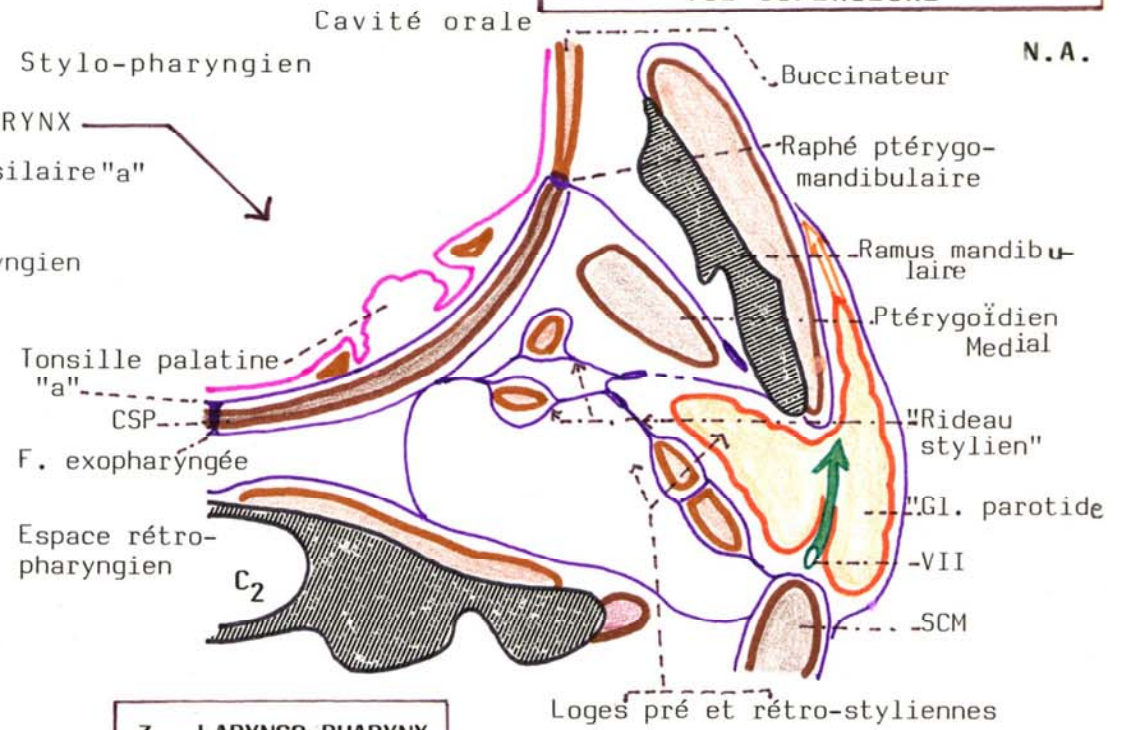
1. NASO-PHARYNX ou "CAVUM"



2 ORO-PHARYNX



1, 2, 3 : COUPES HORIZONTALES VUE SUPERIEURE



3. LARYNGO-PHARYNX

