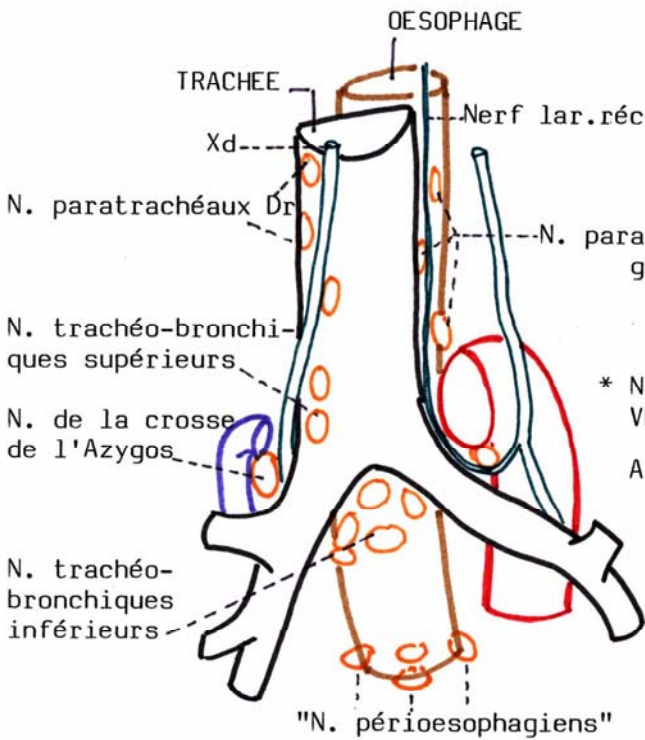
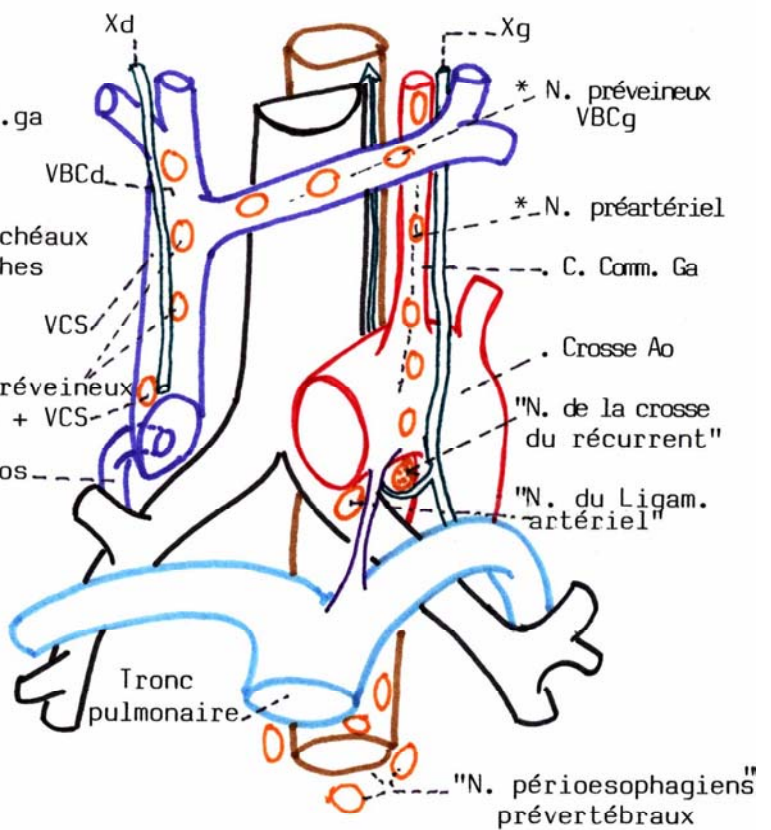


**NOEUDS PERITRACHEO-BRONCHIQUES**



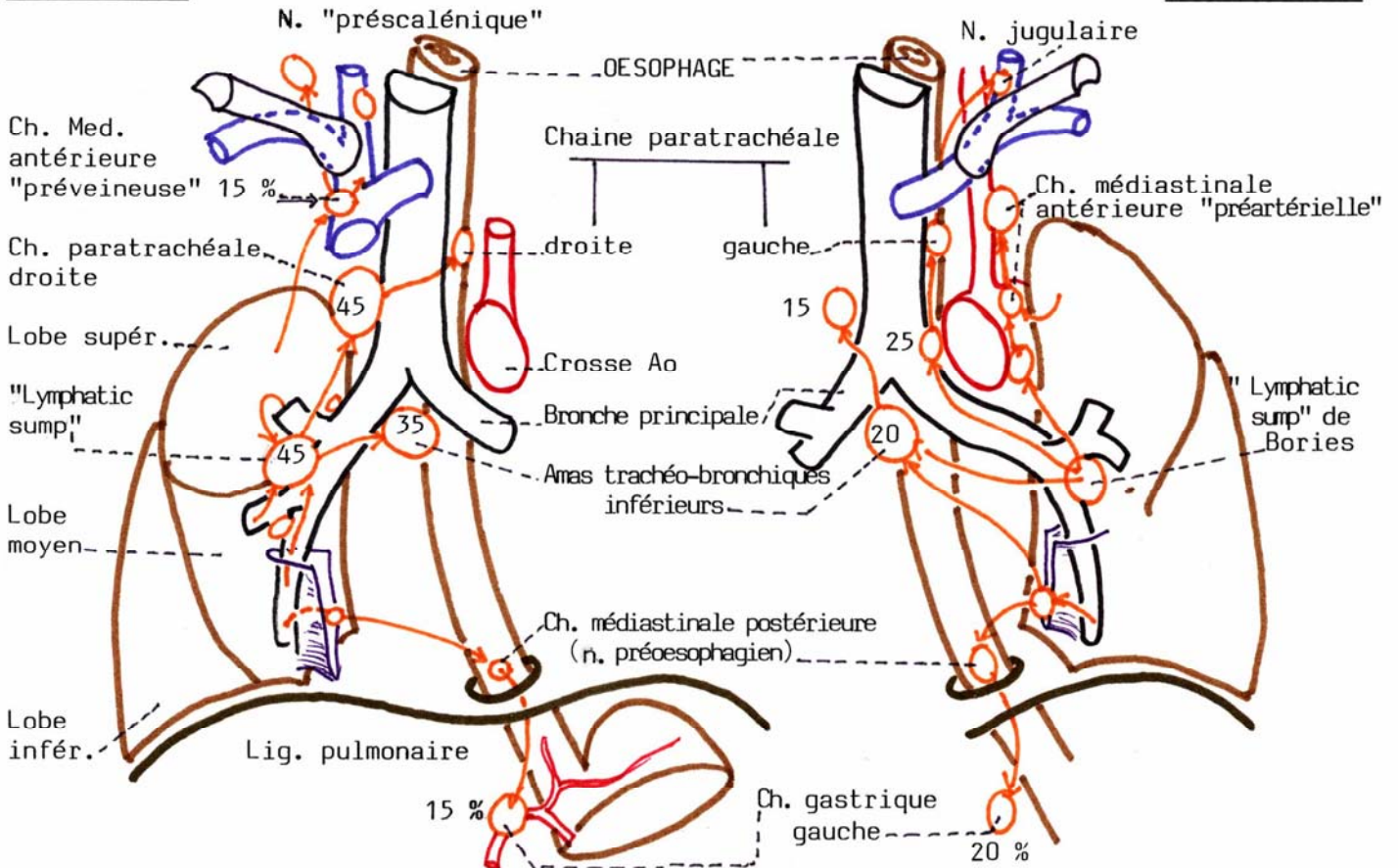
**NOEUDS MEDIASTINAUX ANTERIEURS**



**DRAINAGE LYMPHATIQUE DES POUMONS**

**POUMON DROIT**

**POUMON GAUCHE**



Les chiffres indiquent les pourcentages de lymphe drainé