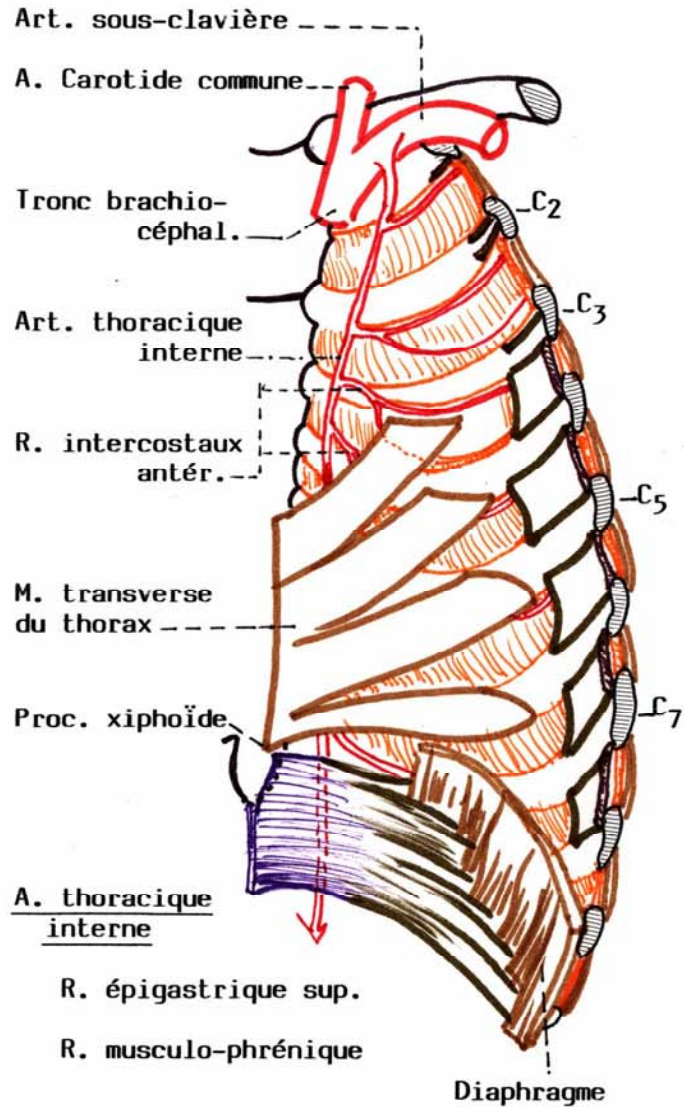


PAROI THORACIQUE ANTERIEURE

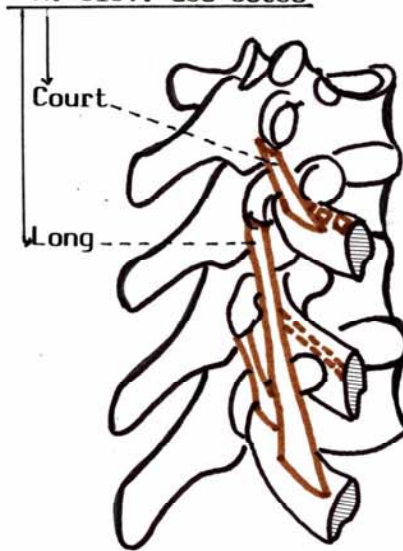
VUE POSTERIEURE



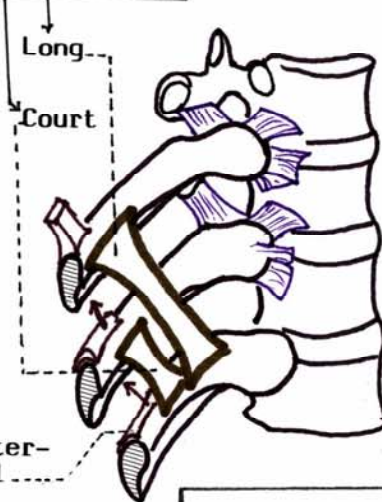
M. transverse de l'abdomen

Mm ELEVATEURS DES COTES

M. élév. des côtes



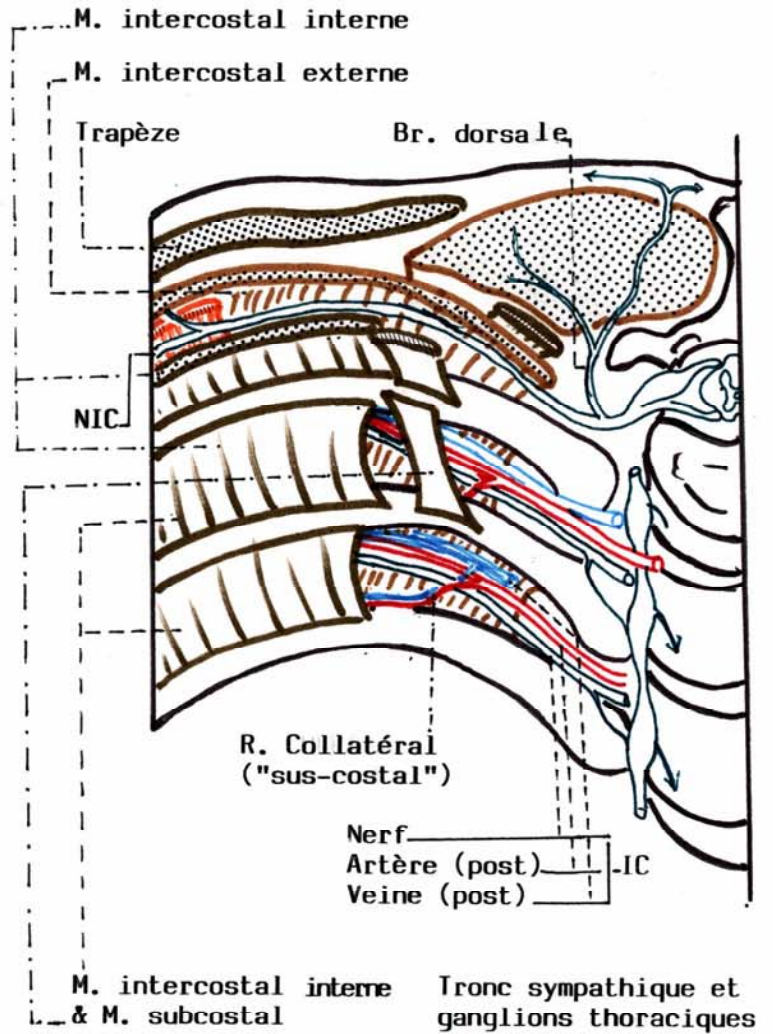
Mm. subcostaux



M. intercostal

Mm. SUBCOSTAUX

PAQUET V.N. INTERCOSTAUX



PAROI THORACIQUE POSTERIEURE

VUE ANTERIEURE